

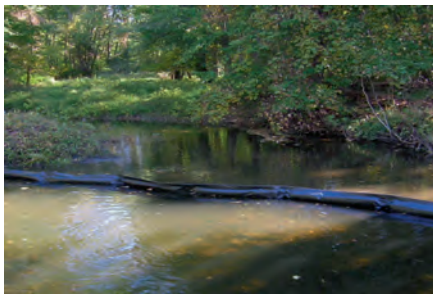
Mk E Floating Baffle System

190100

The Mk E Floating Baffle System is ideal for use in wastewater lagoons and industrial reservoirs. The Mk E baffle can be used to divide the basin into cells to provide e.g. progressive treatment of water and waste by creating a serpentine flow pattern. By increasing the retention time, the baffle systems allow solids and other contaminants to settle to the bottom of the lagoon, reservoir or tank, before the water leaves through the effluent.

The Mk E baffle is constructed of either heavy duty woven polyester coated with XR-5 geomembrane material or alternatively PVC coated polyester fabric (625 g / 22oz) that is highly resistant to chemicals typically found in waste and industrial applications, encapsulated solid closed cell polyethylene foam flotation, elastomeric coated top tension and a hot dipped galvanized chain that can be substituted with steel bars as ballast for the fabric skirt. All anchoring and connector hardware is included.

The durable construction has marine growth inhibitors and is UV resistant. The baffle is low maintenance and can withstand the impacts of freezing temperatures, strong winds and currents.



Technical Specifications:

Length	15-30 m	10-100 ft
Height	1-10 m	3-33 ft
Freeboard	203 mm	8 in
Fabric weight	1016 g/m ² *	30 oz/yd ² **
End connector	Stainless steel type 304	
Ballast	Galvanized chain**	
Tension member(s)	Synthetic parlay cable***	

Benefits:

- Wastewater and industrial applications
- Durable, ideal for permanent installations
- Marine growth inhibitors, UV resistant
- Withstands winds and currents from aerators
- Long service life
- Low maintenance

*Optional (625 g / 22oz) PVC Fabric

**Optional galvanized steel bars

***Optional galvanized cable